

# 18107CH

NICOR Emergency Lighting Heavy-duty Chicago Approved

## Product Description

18107CH series models are designed for Chicago applications where a steel housing is required. The unit is designed for both initial and retrofit installations and offers high-power efficiency and uniform illumination, which are ideal for stores, offices, hospitals and school corridors.

### Construction

- 20-gauge die-formed cold-rolled steel housing
- White corrosion-resistant polyester powder-coat paint with knock-outs for installation
- Two fully adjustable metal heads with PAR36 6V12W lamps

### Electrical

- Dual-voltage input 120V/277V
- Maintenance-free sealed lead-acid battery

### Installation

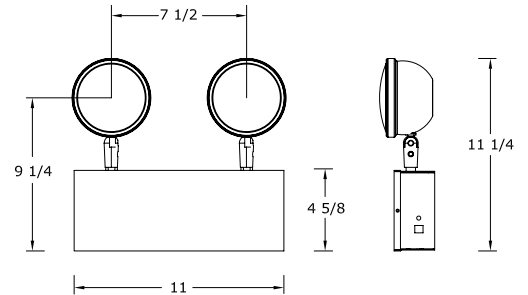
- UL 924 listed for damp location and City of Chicago approved

Project

Catalog

Type

Date



## Ordering Information

Series

18107CH

Specifications and dimensions subject to change without notice

